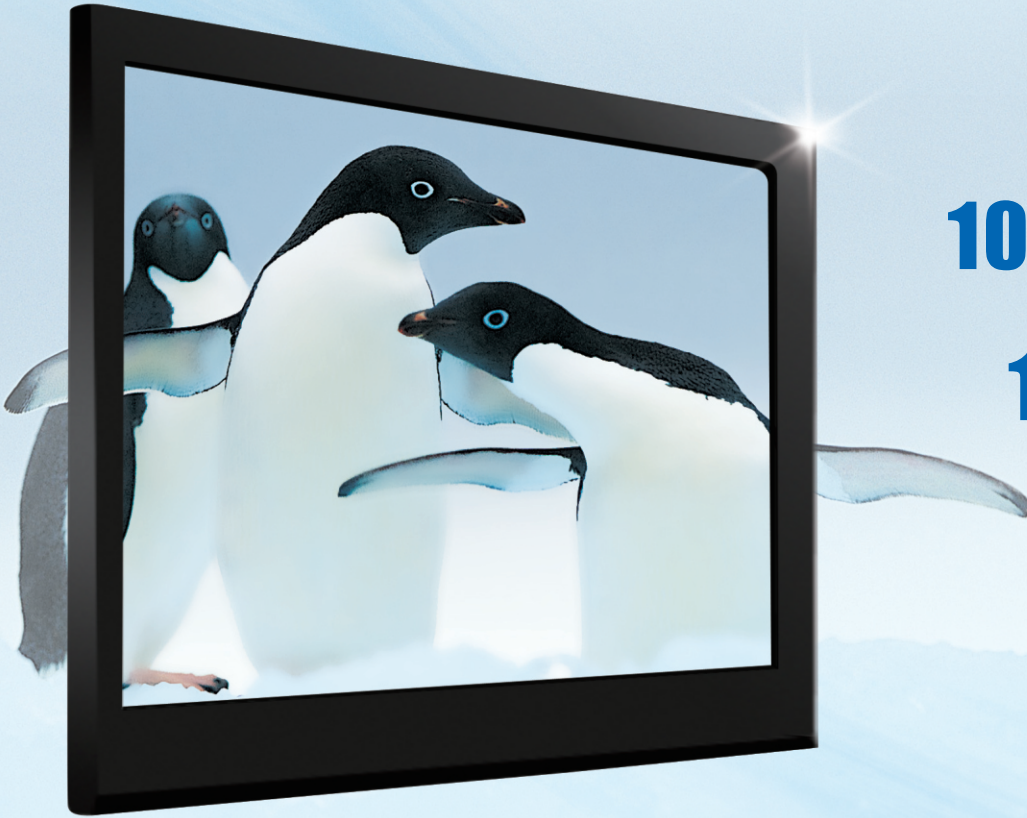


TVT

Secure The World With You

HD CCTV
Over Coax



1080P DISPLAY

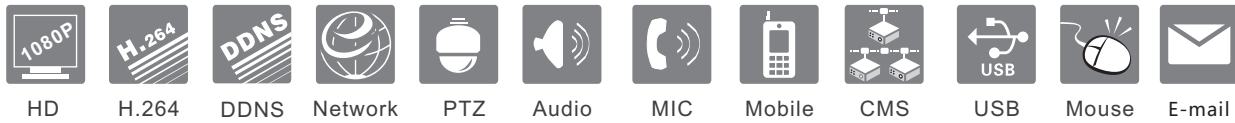
1080P RECORD

1080P PLAYBACK



TD-2732TD-PL

HD TVI DVR
HD TVI DVR



Specification

Model		TD-2732TD-PL	
System	Compression	Standard H.264 High Profile	
	CPU	Cortex A9	
	OS	Embedded Linux	
Video	Input	BNC × 32 Support TVI 1080P@25 / 30fps, 720P@25 / 30 / 50 / 60fps and AHD 1080P@25 / 30fps, 720P@25 / 30fps, WD1 input	
	Output	HDMI × 1 : 1920 × 1080 VGA × 1 : 1920 × 1080	
Audio	Input	RCA × 16	
	Output	RCA × 1	
	2-way audio	RCA × 1	
Record	Resolution	1080P: 1920 × 1080, 720P : 1280 × 720, WD1	
	Frame Rate	720P / WD1	800 fps (PAL) / 960 fps (NTSC)
		1080P	400 fps (PAL) / 480 fps (NTSC)
	Bit rate	768Kbps ~ 8Mbps	
	Encode	VBR / CBR	
	Quality	6 Level	
	Mode	Manual, timer, motion, sensor	
File manager	Lock, unlock		
Play back	Playback	8 CH	
	Search	Time / calendar search, event (motion, external alarm)	
	Smart Search	Highlighted date and time to display the channel record	
	Function	Play, pause, FF, FB, digital zoom	
Alarm	Mode	Sensor, motion, video loss	
	Input	16 CH	
	Output	4 CH	
	Triggering	Record, PTZ move, alarm out, e-mail, etc	
Network	Interface	RJ45 10M / 100M / 1000M × 1	
	Protocol	TCP / IP, UDP, DHCP, DNS, PPPOE, DDNS	
	Others	Up to 10 online users , dual stream	
Cell phone	OS	iPhone, Andriod	
	Function	Multi-screen surveillance (for certain model) , record, snapshot, PTZ control, save the device list	
I / O	HDD	SATA × 8, e-SATA × 2	
	RS485	RS485 × 2, one for PTZ, another for keyboard	
	USB	USB 2.0 × 2, one for mouse, another for USB backup device	
	IR controller	Yes	
Others	Power supply	ATX	
	Consumption	< 40W (without HDD)	
	Dimensions (mm)	430 × 450 × 90 (W × D × H)	
Work Environment	- 10 °C ~ 50 °C , 10 % ~ 90 % Humidity		

Introduction

TD-2732TD-PL series are standard 32 CH 1080P high resolution DVRs, which adopt the standard H.264 high profile compression format and the most advanced SOC technique to ensure recording in each channel and realize outstanding robustness of the system. TD-2732TD-PL support 32 CH video input, 16 CH audio input, simultaneous 8 CH playback. The series of product can meet different security requirements of home, financial, commerce, enterprise, transportation and government, etc.

Characteristics

- 32 CH HD video input, 1080P / 720P / WD1 recording
- Adopt standard H.264 high profile compression format to get high-quality video at much lower bit rate
- Intuitive and user-friendly Graphic User Interface (GUI), Windows style operation by mouse
- Multi-mode recording: manual / timer / motion / sensor
- Playback: 8 CH simultaneously playback
- Search: time / calendar, events (alarm, motion)
- Express and flexible backup via USB and network and so on
- Pentaplex : preview, record, playback, backup and remote access
- DHCP, DDNS, PPPoE Network protocol, IE browse and CMS supported
- Remote control via IE or CMS: preview, playback, backup, PTZ and configuration
- Support dual stream technology to encode recording stream and network stream separately; network stream can be adjustable to fit bandwidth without changing recording quality
- Multi-user online simultaneously
- Authorization management, log review and device status review
- HDMI 1080P output, true high resolution display
- Support PTZ preset and auto cruise, up to 128 presets and 8 cruises
- Powerful smart phone surveillance supporting iPhone, Andriod
- Support NAT function, support QR code scanning by mobile phone
- Complete SDK software available, easy to integrate with other applications

Dimensions

